

A photograph of an Arctic landscape. In the foreground, three reindeer with large, dark antlers are walking across a field of dry, brownish grass. The background features a range of blue mountains under a clear sky. The text is overlaid on the image.

# **Arctic Boreal Vulnerability Experiment (ABoVE) 2024 ABoVE L-band SAR Airborne Flights**

**19 August 2024 (DOY 232)  
Seward Peninsula**

**Charles Miller, Deputy Science Lead  
Jet Propulsion Laboratory, California Institute of Technology  
Peter Griffith, Elizabeth Hoy  
Carbon Cycle & Ecosystems Office  
and the ABoVE Science Team**

**For Ryan Pavlick, Kathy Hibbard, Laura Lorenzoni, Bruce Tagg, Jack Kaye  
NASA HQ  
2024**



# 19 August 2024/DOY 232

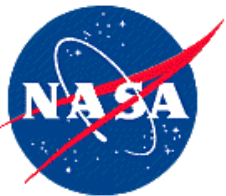
## Seward Peninsula



### Daily Summary:

- **C-20A (N802NA) L-band SAR ABoVE CAMPAIGN (CANADA / ALASKA)**
- REPORT DATE: 19 August 2024
- Current Status of Aircraft: **GREEN**
- Current Status of SAR: **GREEN**
- Current Status of PPA: **GREEN**
- Current Deployment Location: Fairbanks, AK (PAFA)
- Crew: Nelson, Phelps, Little, Ginn, Griffith, Hoy, Douglas, Austerberry
- Science Coordinator: N Pinto
- Science Lead: C Miller
- Project Manager: Y Lou





# 19 August 2024/DOY 232

## Seward Peninsula



### Daily Summary:

- Fairbanks (PAFA) - Fairbanks (PAFA)
- Collected 8 of 8 data lines
- Flight Plan – Flight Plan 2133\_v01
- Essentially no fire smoke
- Mostly/Cloudy skies across the domain. Remnants of a typhoon entering Bering Sea
- NGEE-Arctic team on the ground making validation measurements





# 19 August 2024/DOY 232 Seward Peninsula







# 19 August 2024/DOY 232

## Seward Peninsula

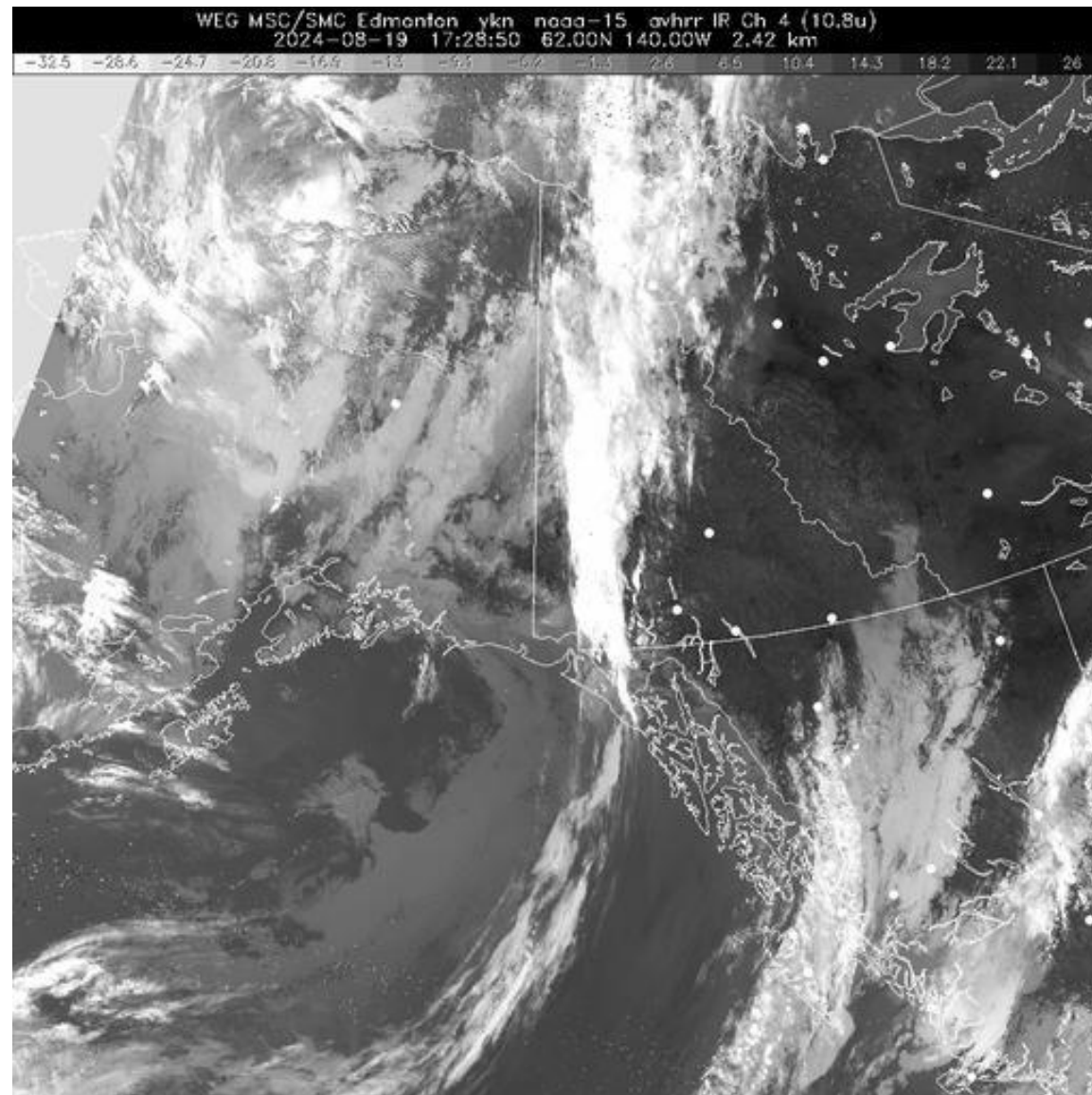
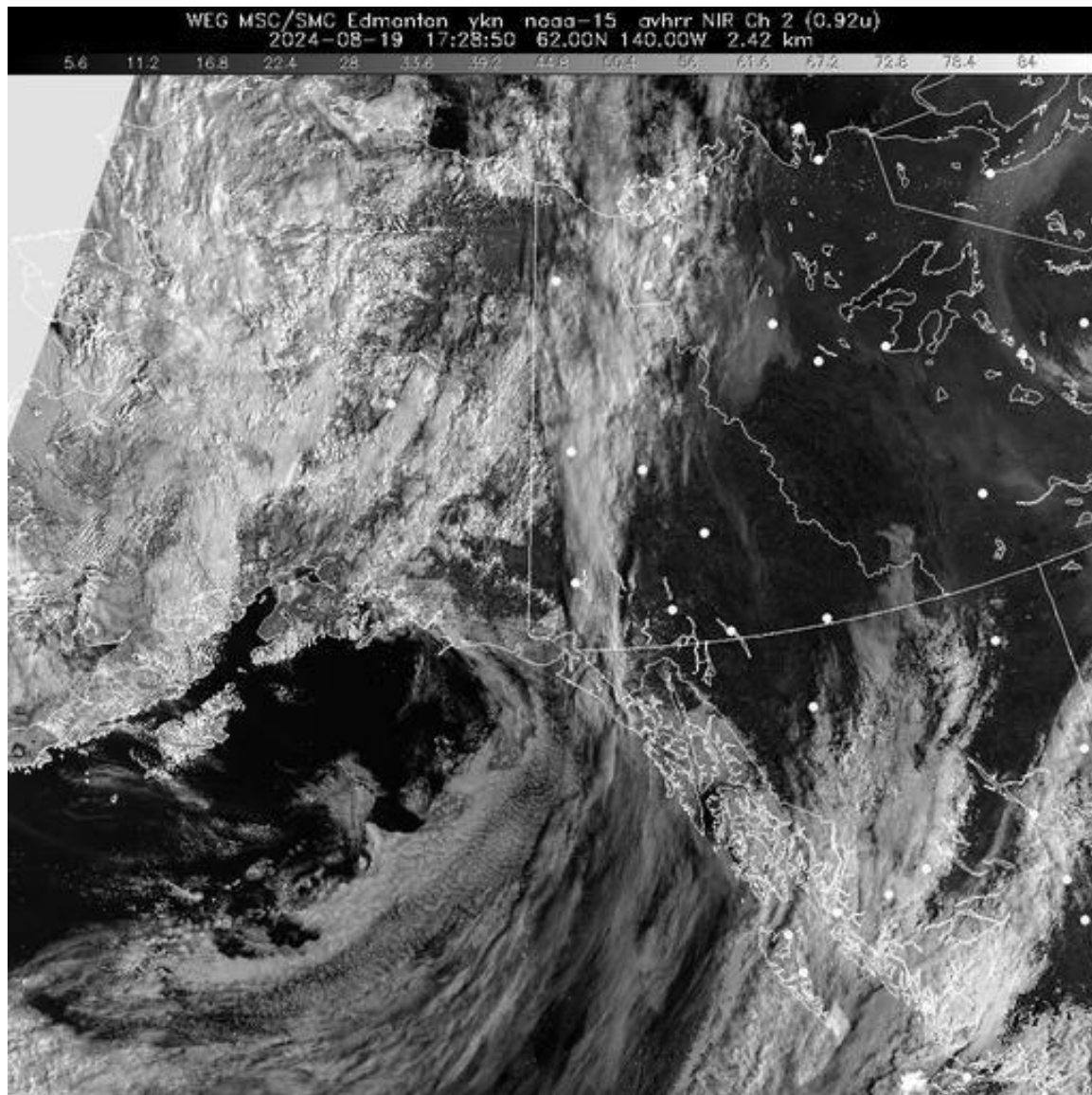






# 19 August 2024/DOY 232

## Seward Peninsula

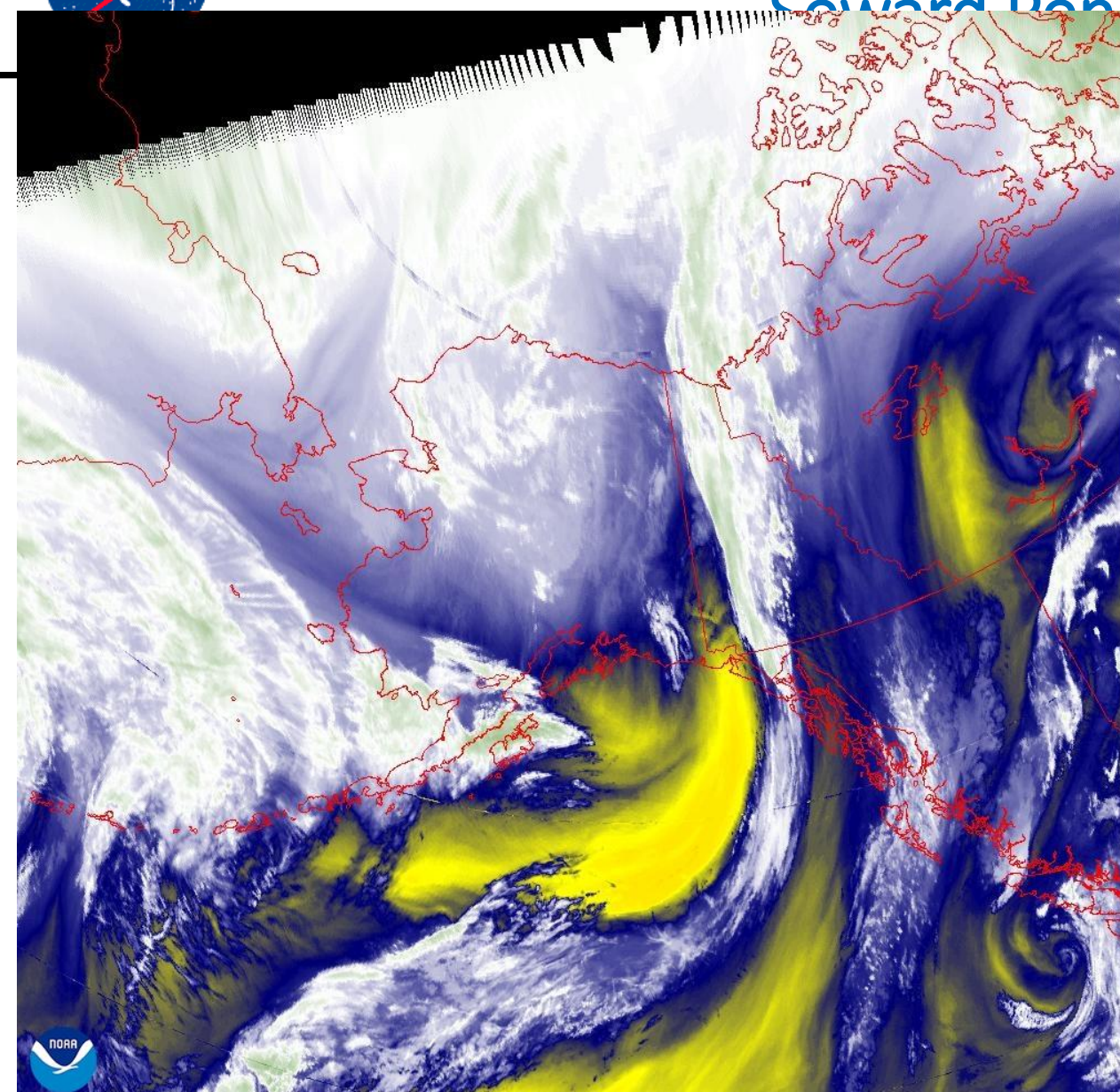




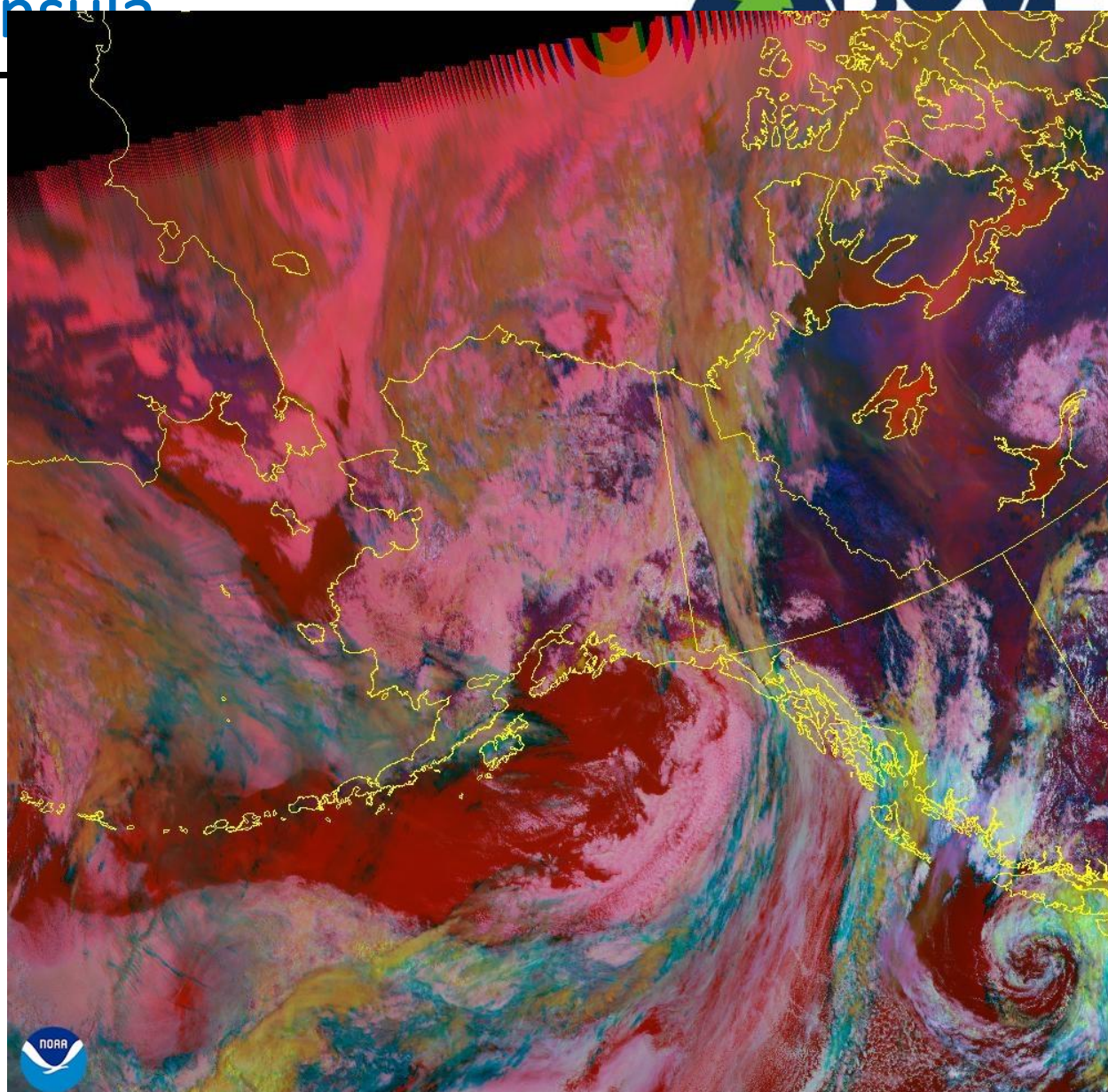


19 August 2024/DOY 232

Seward Peninsula

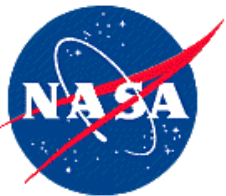


19 Aug 2024 19:40Z - NOAA/NESDIS/STAR - GOES-West - Band 10 - AK



19 Aug 2024 19:20Z - NOAA/NESDIS/STAR - GOES-West - DayNightCloudMicroCombo Composite - AK





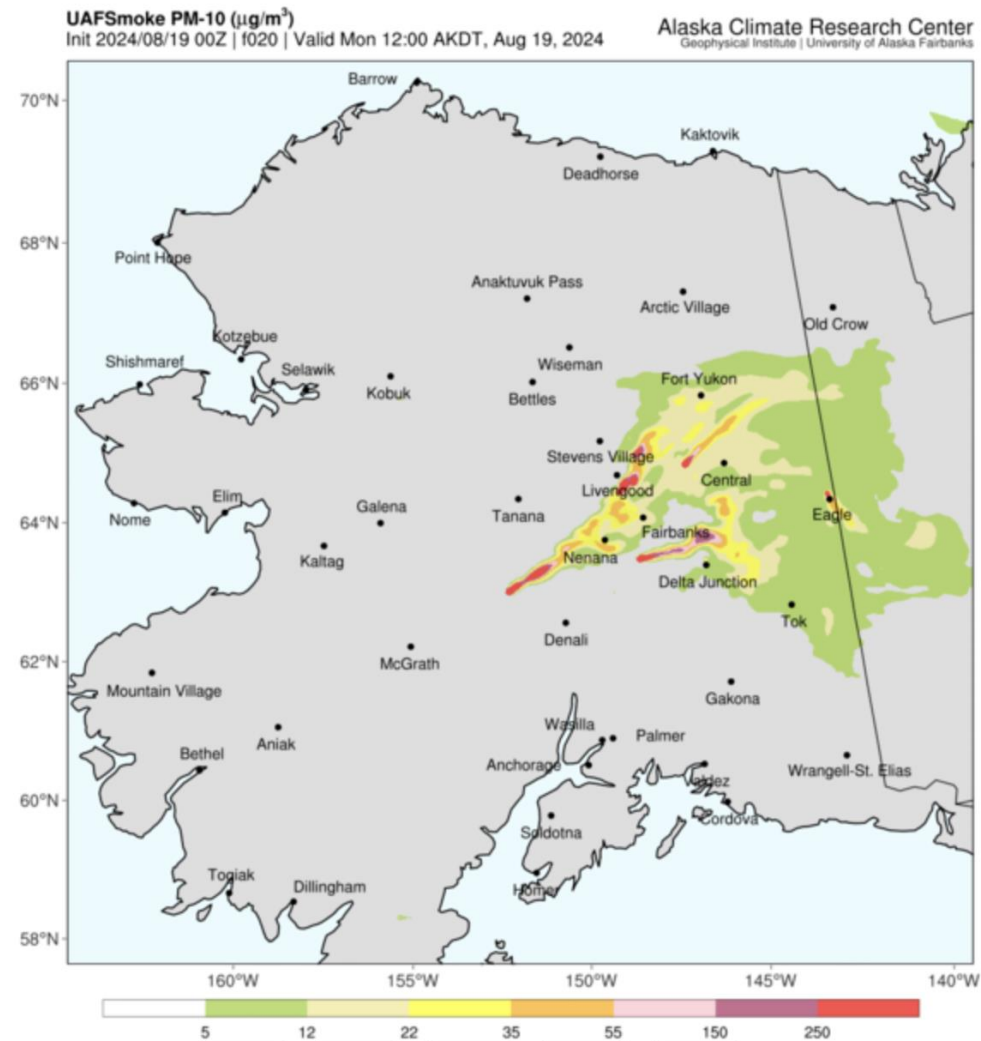
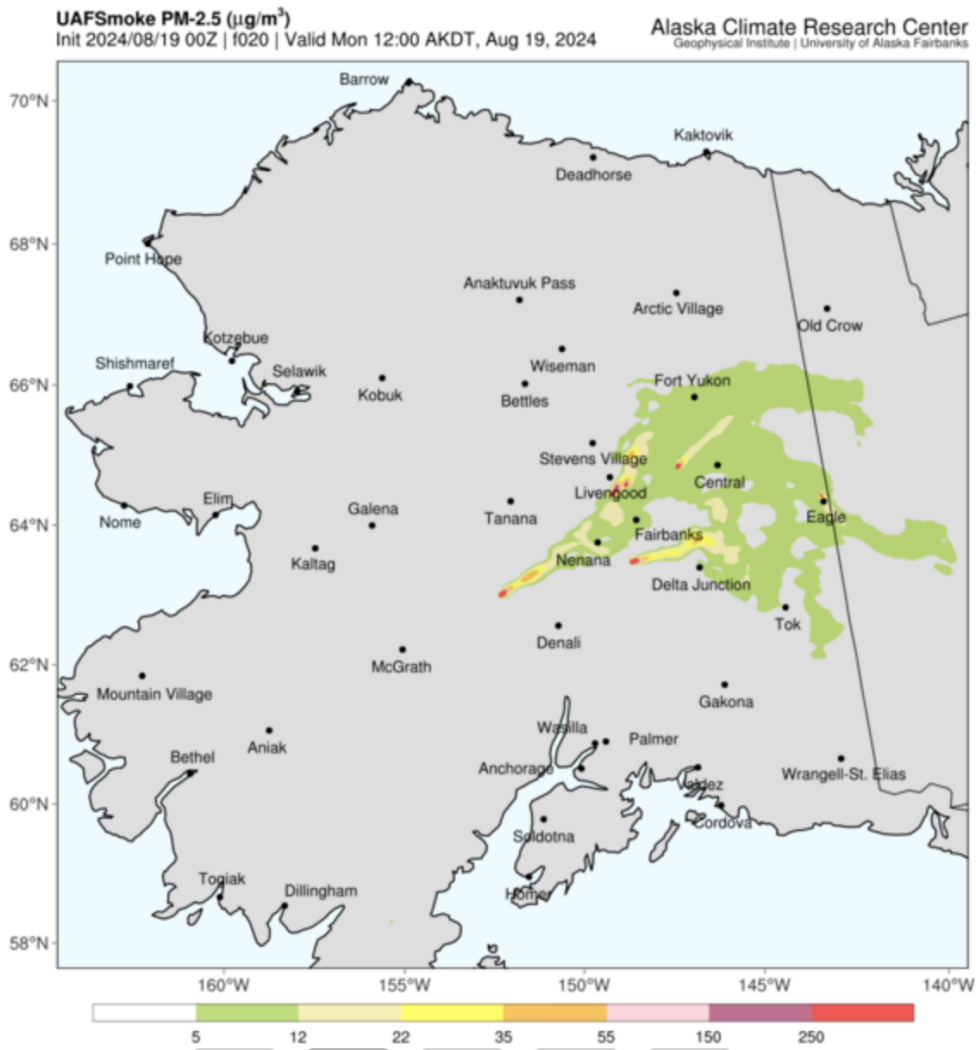
# 19 August 2024/DOY 232

## Seward Peninsula



PM-2.5: Particulate Matter (smoke particles 2.5 micrometers or less in diameter) near surface  
(Loading slowly? [Click here](#) for a simpler animation.)

PM-10: Particulate Matter (smoke particles 10 micrometers or less in diameter) near surface  
(Loading slowly? [Click here](#) for a simpler animation.)







# 19 August 2024/DOY 232 Seward Peninsula

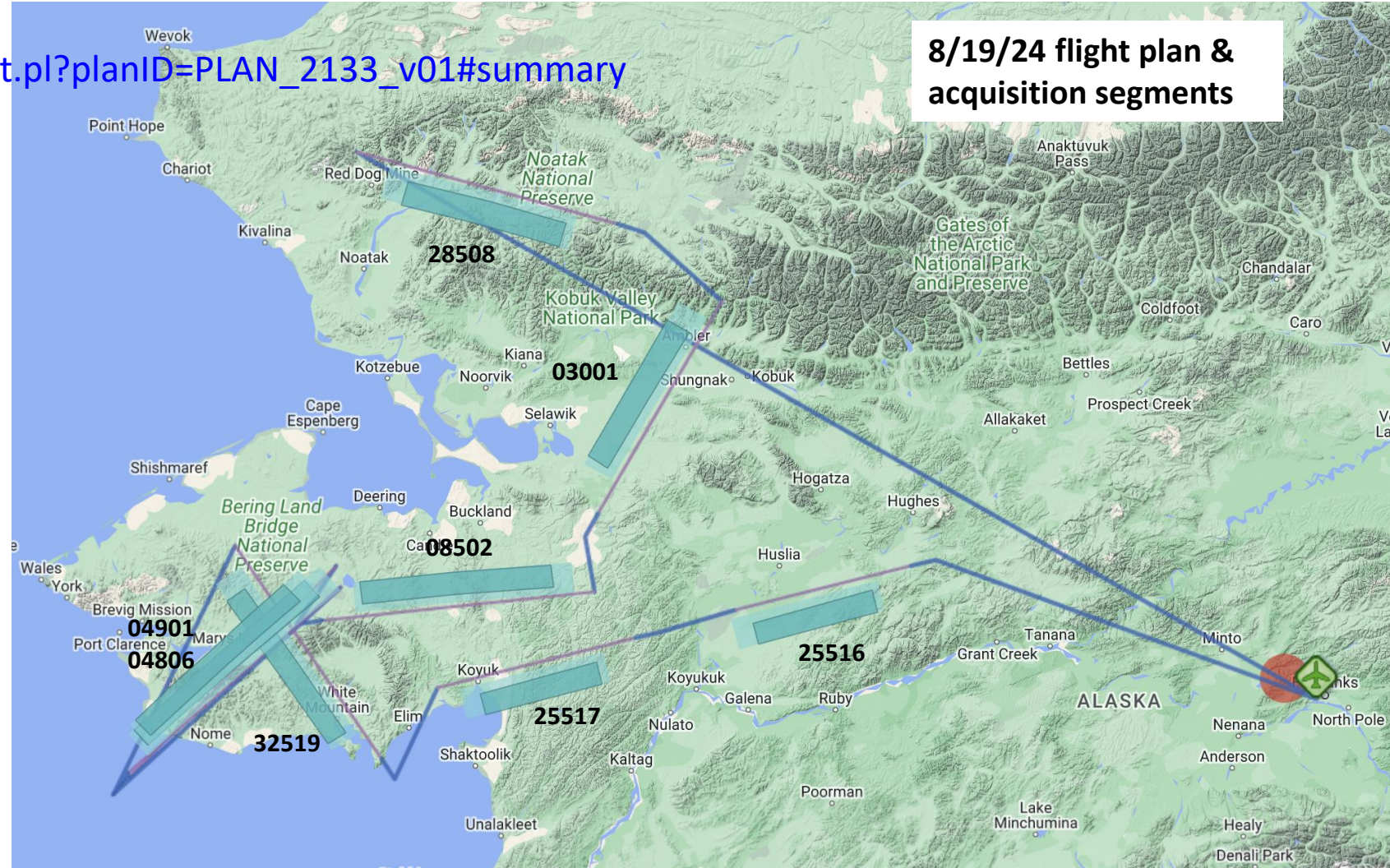


Flight Plan Report: PLAN\_2133\_v01

[https://uavsar.jpl.nasa.gov/cgi-bin/report.pl?planID=PLAN\\_2133\\_v01#summary](https://uavsar.jpl.nasa.gov/cgi-bin/report.pl?planID=PLAN_2133_v01#summary)

## Data Acquisitions:

- Line 1: huslia\_25516
- Line 2: koyukk\_25517
- Line 3: counci\_32519
- Line 4: teller\_04901
- Line 5: teller\_04806
- Line 6: kougar\_08502
- Line 7: ambler\_03001
- Line 8: noatak\_28508







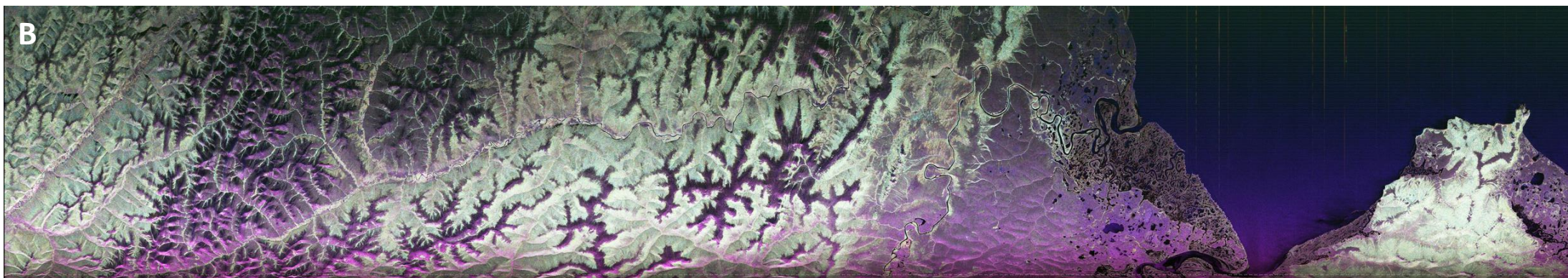
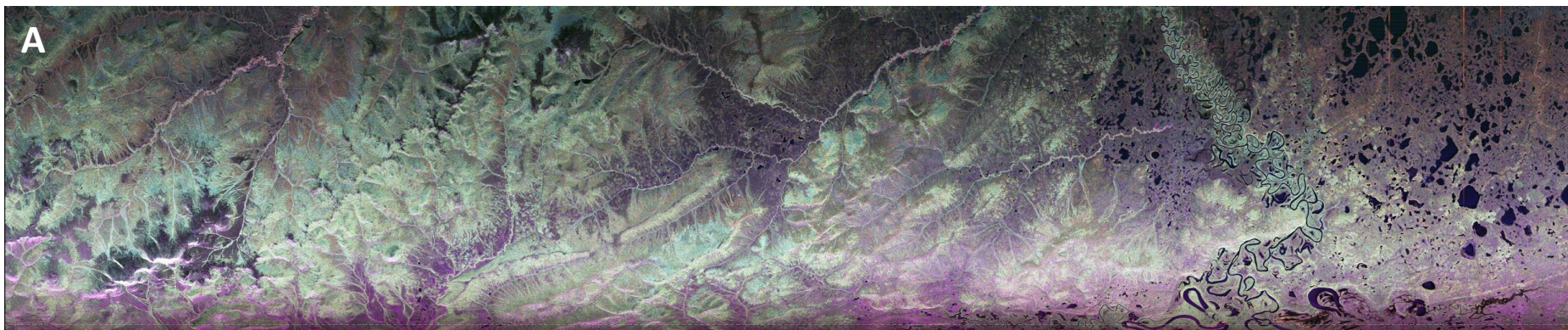
# 19 August 2024/DOY 232 Seward Peninsula



UAVSAR Quick-look products

- A. Line 1: **huslia\_25516**
- B. Line 2: **koyukk\_25517**

*Annemarie Peacock, JPL*







# 19 August 2024/DOY 232 Seward Peninsula

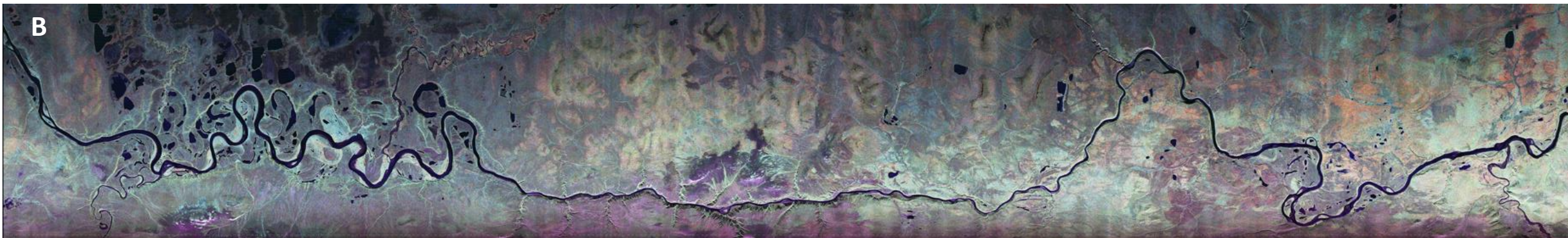
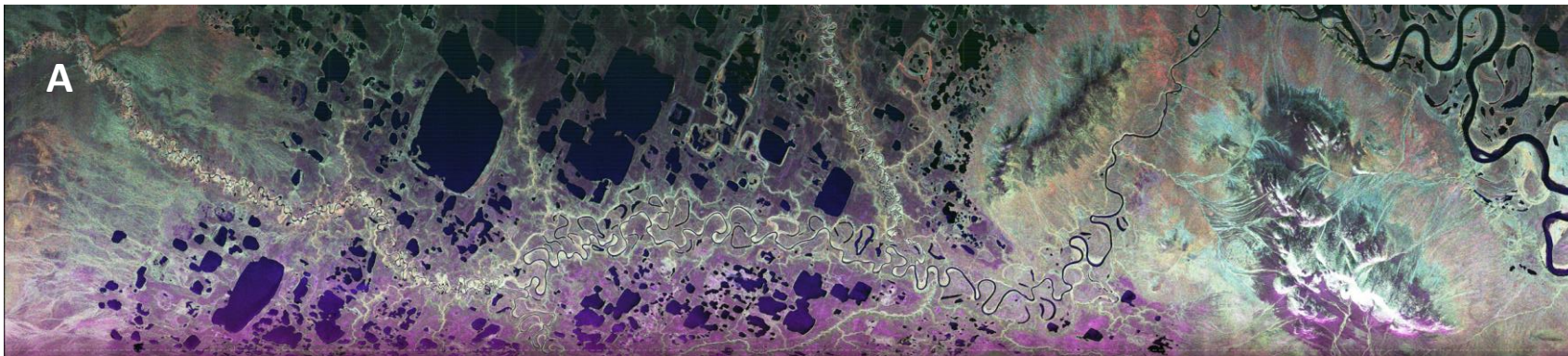


UAVSAR Quick-look products

A. Line 3: **counci\_32519**

B. Line 4: **teller\_04901**

*Annemarie Peacock, JPL*







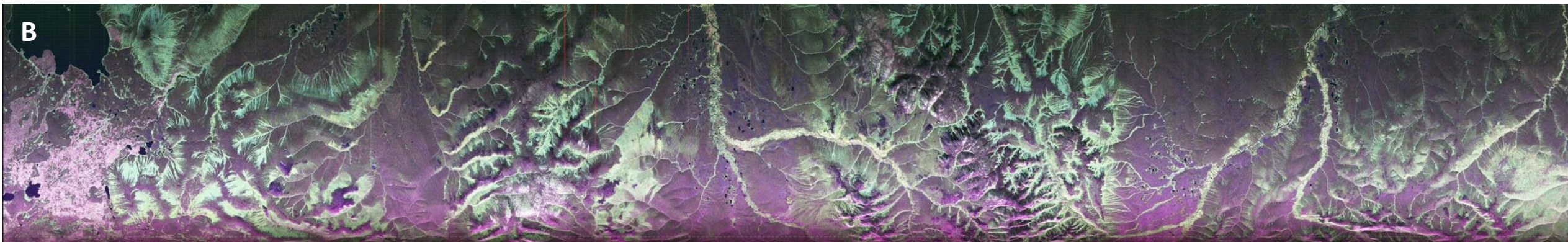
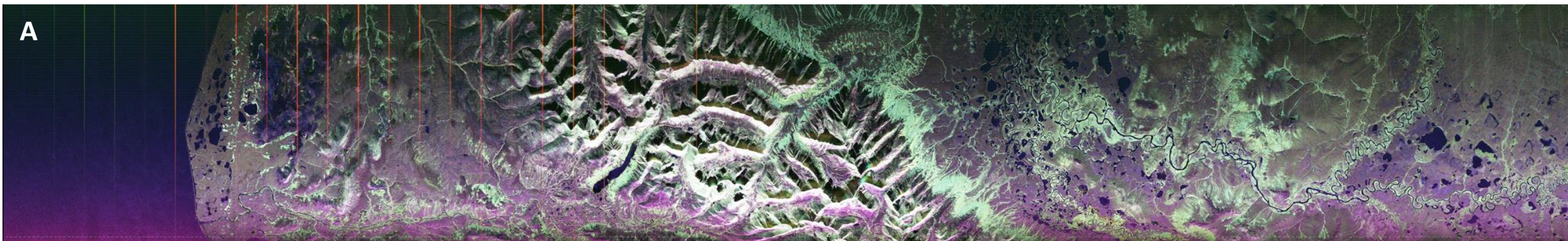
# 19 August 2024/DOY 232 Seward Peninsula



UAVSAR Quick-look products

- A. Line 5: teller\_04806
- B. Line 6: kougar\_08502

*Annemarie Peacock, JPL*







# 19 August 2024/DOY 232 Seward Peninsula

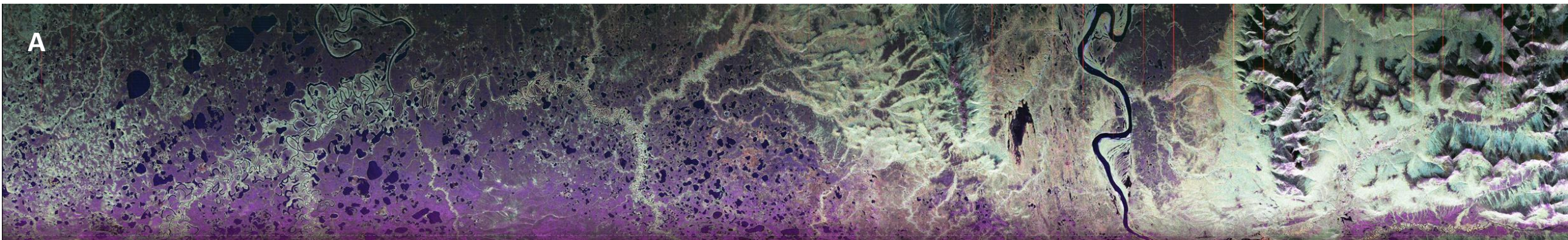


UAVSAR Quick-look products

A. Line 7: ambler\_03001

B. Line 8: noatak\_28508

*Annemarie Peacock, JPL*





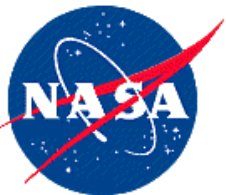


19 August 2024/DOY 232  
Seward Peninsula



**BACKUP**





# 19 August 2024/DOY 232

## Seward Peninsula



The main map shows the Seward Peninsula with several station locations marked: PAOT, PAIK, PFNO, PASK, PAOB, PASH, PPDM, Wales, PATC, PATE, and PAOM. Green arrows radiate from the Wales station, indicating the directions of the camera viewports.

### Wales (PAIW)

UTC:20:07 Local:12:07

Wales (N) 20:02 08/19/24 (UTC) 12:02 08/19/24 (AKDT)

FAA advisory weather product

CLEARDAY VISUAL REFERENCE

End of Runway < 1.0 SM

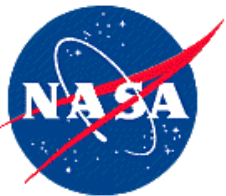
Site Elevation: 26' MSL

Show Camera Loop

North (10°)	East (80°)	South (180°)	West (280°)

Weather Data	Weather Trends	PIREPs	RCO	Airport Info	NOTAMS (PilotWeb)
--------------	----------------	--------	-----	--------------	-------------------





# 19 August 2024/DOY 232

## Seward Peninsula



**Teller (PATE)** UTC:20:07 Local:12:07

METAR PATE 191956Z AUTO 27015G19KT 10SM BKN016 04/01 A2988 RMK A02 SLP123 T00390006 TSNO PNO \$

Teller (E) 19:58 08/19/24 (UTC) 11:58 08/19/24 (AKDT)

**CLEARDAY VISUAL REFERENCE**

850' MSL 10.0 SM  
4350' MSL 32.0 SM  
Ravine 2.0 SM  
Site Elevation: 296' MSL

Show Camera Loop

East (100°)	SouthEast (150°)	West (260°)	NorthWest (335°)

Weather Data | Weather Trends | PIREPs | RCO | Airport Info | NOTAMS (PilotWeb)





# 19 August 2024/DOY 232

## Seward Peninsula



The main map shows the Seward Peninsula with various airports marked. PAOM is highlighted with a green circle and arrows pointing to camera viewports. The viewports show: a large main view of the airport with a METAR report, a 'CLEARDAY VISUAL REFERENCE' image with elevation markers (1000' MSL, 1200' MSL, Site Elevation: 32' MSL), and a 'Show Camera Loop' section with three smaller viewports labeled NorthEast (36°), SouthEast (115°), and SouthWest (219°). A bottom navigation bar includes: Weather Data, Weather Trends, PIREPs, RCO, Airport Info, and NOTAMs (PilotWeb).

**Nome (PAOM)** UTC:20:07 Local:12:07

**METAR PAOM 191953Z 29015G23KT 10SM FEW022 07/02 A2989 RMK A02 SLP123 T00670017 \$**

20:03 08/19/24 (UTC) 12:03 08/19/24 (AKDT)

**CLEARDAY VISUAL REFERENCE**

1000' MSL  
4.0 SM

1200' MSL  
5.0 SM

Site Elevation: 32' MSL

**Show Camera Loop**

NorthEast (36°) SouthEast (115°) SouthWest (219°)

Weather Data Weather Trends PIREPs RCO Airport Info NOTAMs (PilotWeb)





# 19 August 2024/DOY 232

## Seward Peninsula



**Shishmaref (PASH)** UTC:20:07 Local:12:07

METAR PASH 191956Z AUTO 29022KT 8SM OVC022 03/M01 A2982 RMK AO2 PK WND 28029/1910 RAE06 SLP100 P0000 T00281006

Shishmaref (NE) 20:04 08/19/24 (UTC) 12:04 08/19/24 (AKDT)

**CLEARDAY VISUAL REFERENCE**

Buildings Less than 1.0 SM

Site Elevation: 10' MSL

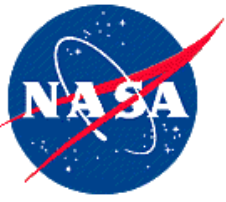
FAA advisory weather product

Show Camera Loop

NorthEast (65°)	SouthEast (145°)	South (194°)	SouthWest (237°)

Weather Data | Weather Trends | PIREPs | RCO | Airport Info | NOTAMs (PilotWeb)





# 19 August 2024/DOY 232

## Seward Peninsula



### White Mountain (PAWM)

UTC:20:07 Local:12:07

METAR PAWM 191956Z AUTO 33010KT 8SM OVC017 04/01 A2988 RMK AO2 SLP121 T00390006 PNO \$

White Mountain (NE) 19:58 08/19/24 (UTC) 11:58 08/19/24 (AKDT)

FAA advisory weather product

CLEARDAY VISUAL REFERENCE

500' MSL 2.5 SM  
500' MSL 1.25 SM  
Site Elevation: 254' MSL

Show Camera Loop

NorthEast (40°) SouthEast (130°) SouthWest (235°) NorthWest

Weather Data Weather Trends PIREPs RCO Airport Info NOTAMS (PilotWeb)





# 19 August 2024/DOY 232

## Seward Peninsula



**Elim (PFEL)** UTC:20:07 Local:12:07

METAR PFEL 191956Z AUTO 30012G18KT 10SM BKN020 06/01 A2984 RMK AO2 SLP105 T00610011 PNO \$

Elim (N) 20:03 08/19/24 (UTC) 12:03 08/19/24 (AKDT)

**CLEARDAY VISUAL REFERENCE**

1350' MSL 4.5 SM  
1600' MSL 7.0 SM  
1000' MSL 3.5 SM

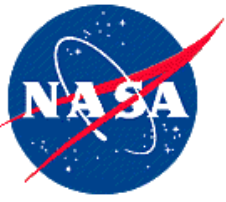
Site Elevation: 151' MSL

Show Camera Loop

 North (355°)	 NorthEast (55°)	 SouthEast (115°)	 South (190°)		
<a href="#">Weather Data</a>	<a href="#">Weather Trends</a>	<a href="#">PIREPs</a>	<a href="#">RCO</a>	<a href="#">Airport Info</a>	<a href="#">NOTAMs (PilotWeb)</a>

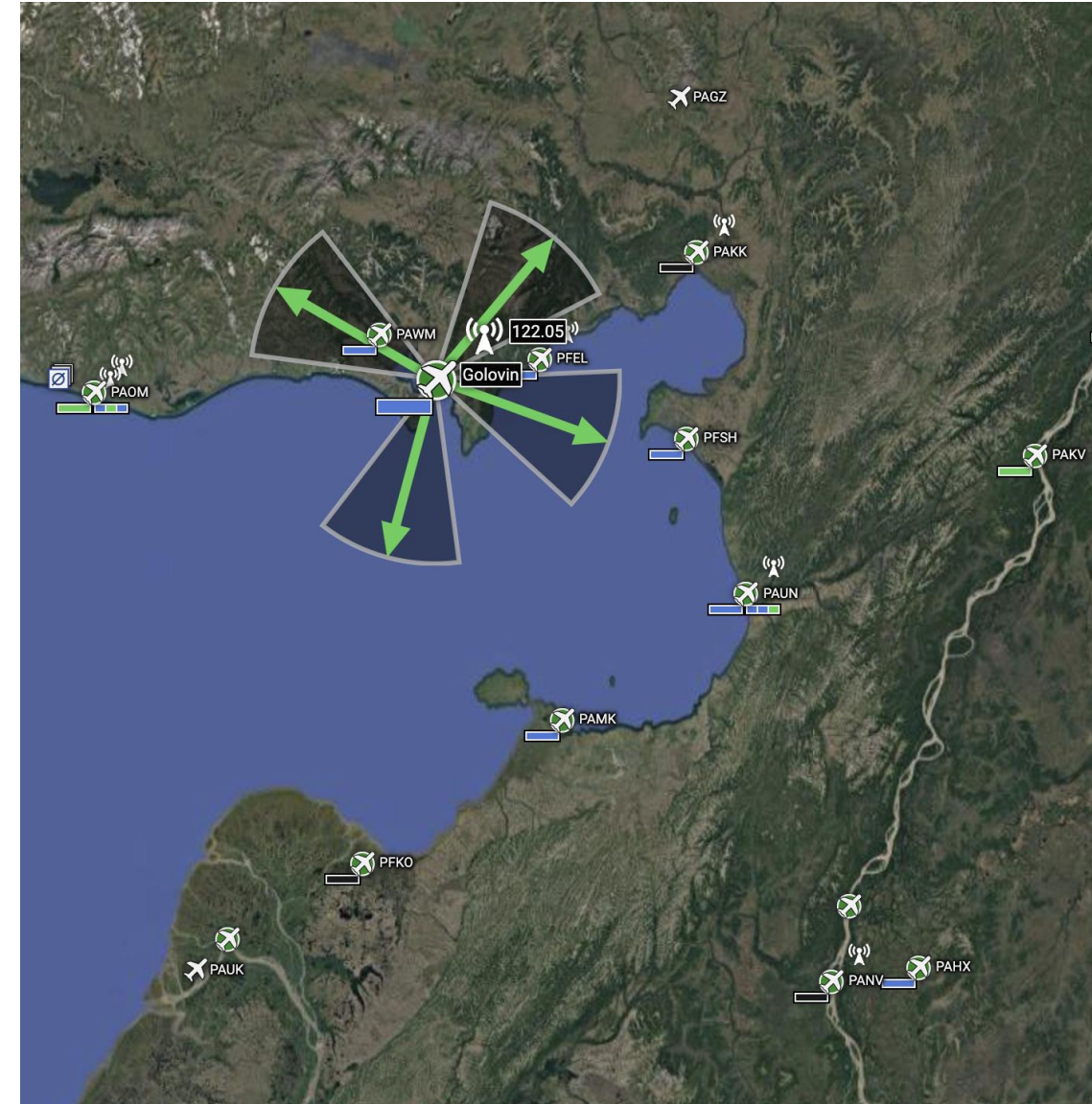
57.52419,64.61472,7/airport/ELI/details/camera





# 19 August 2024/DOY 232

## Seward Peninsula




Golovin (PAGL) UTC:20:07 Local:12:07

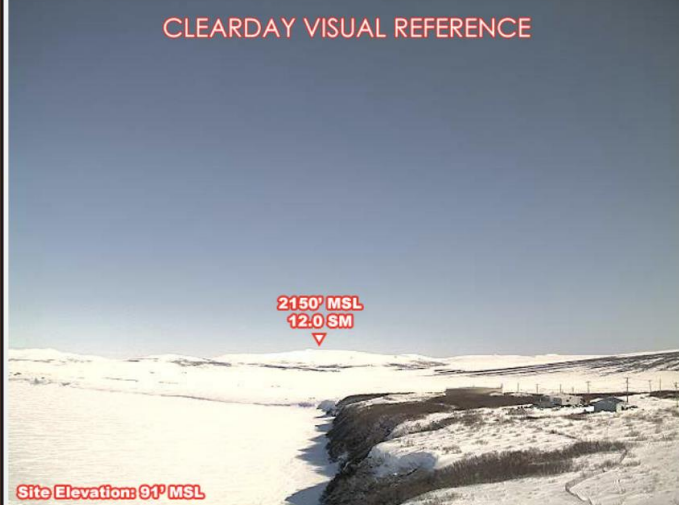
METAR PAGL 191956Z AUTO 34007KT 10SM BKN016 OVC022 05/02 A2989 RMK AO2 SLP115 T00500022 PNO \$

**There is no current image available for this camera.**

**Images greater than 60 minutes old are not displayed.**



CLEARDAY VISUAL REFERENCE




2150' MSL  
12.0 SM

Site Elevation: 91' MSL

Show Camera Loop

There is no current image available for this camera.


Images greater than 60 minutes old are not displayed.



NorthEast (40°)



East (110°)



South (195°)





# 19 August 2024/DOY 232

## Seward Peninsula



**Koyuk Alfred Adams (PAKK)** UTC:20:08 Local:12:08

Koyuk (N) 20:01 08/19/24 (UTC) 12:01 08/19/24 (AKDT)

**CLEARDAY VISUAL REFERENCE**

Site Elevation: 196' MSL

No annotatable features

FAA advisory weather product

Show Camera Loop

North (5°)	SouthEast (115°)	South (200°)	West (260°)

Weather Data | Weather Trends | PIREPs | RCO | Airport Info | NOTAMs (PilotWeb)





# 19 August 2024/DOY 232 Seward Peninsula



**Buckland (PABL)** UTC:20:08 Local:12:08

METAR PABL 191956Z AUTO 26017G28KT 9SM -RA OVC014 04/02 A2976 RMK AO2 PK WND 25028/1949 SLP079 P0000 T00390022

Buckland (NE) 20:01 08/19/24 (UTC) 12:01 08/19/24 (AKDT)

FAA advisory weather product

CLEARDAY VISUAL REFERENCE

1050' MSL 7.0 SM  
1900' MSL 15.0 SM  
Site Elevation: 51' MSL

Show Camera Loop

NorthEast (30°)

SouthEast (141°)

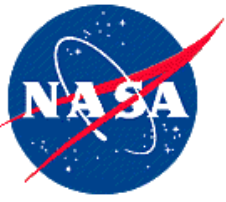
West (265°)

NorthWest (305°)

Weather Data
Weather Trends
PIREPs
RCO
Airport Info
NOTAMs (PilotWeb)

63.78396,-146.91061,68.0047/airport/BVK/details/.../full





# 19 August 2024/DOY 232 Seward Peninsula



**Deering (PADE)** UTC:20:08 Local:12:08

METAR PADE 191953Z AUTO 23022G34KT 10SM OVC014 03/02 A2974 RMK A02 PK WND 23036/1938 SLP072 T00330017 TSNO \$

Deering (N) 20:01 08/19/24 (UTC) 12:01 08/19/24 (AKDT)

**CLEARDAY VISUAL REFERENCE**

Site Elevation: 18' MSL

No annotatable features

FAA advisory weather product

Show Camera Loop

North (5°)	East (70°)	South (165°)	NorthWest (29)
------------	------------	--------------	----------------

Weather Data | Weather Trends | PIREPs | RCO | Airport Info | NOTAMs (PilotWeb)





# 19 August 2024/DOY 232

## Seward Peninsula



**Kivalina (PAVL)** UTC:20:08 Local:12:08

Kivalina (NE) 20:07 08/19/24 (UTC) 12:07 08/19/24 (AKDT)

**CLEARDAY VISUAL REFERENCE**

700' MSL  
11:0 SM

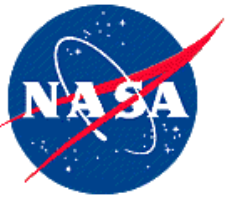
Site Elevation: 8" MSL

FAA advisory weather product

Show Camera Loop

 NorthEast (60°)	 East (105°)	 SouthEast (152°)	 NorthWest (312°)		
<a href="#">Weather Data</a>	<a href="#">Weather Trends</a>	<a href="#">PIREPs</a>	<a href="#">RCO</a>	<a href="#">Airport Info</a>	<a href="#">NOTAMs (PilotWeb)</a>





# 19 August 2024/DOY 232 Seward Peninsula



**Noatak (PAWN)** UTC:20:08 Local:12:08

Noatak (NE) 20:00 08/19/24 (UTC) 12:00 08/19/24 (AKDT)

**CLEARDAY VISUAL REFERENCE**

2250' MSL 37.0 SM  
3250' MSL 25.0 SM  
Site Elevation: 56' MSL

FAA advisory weather product

Show Camera Loop

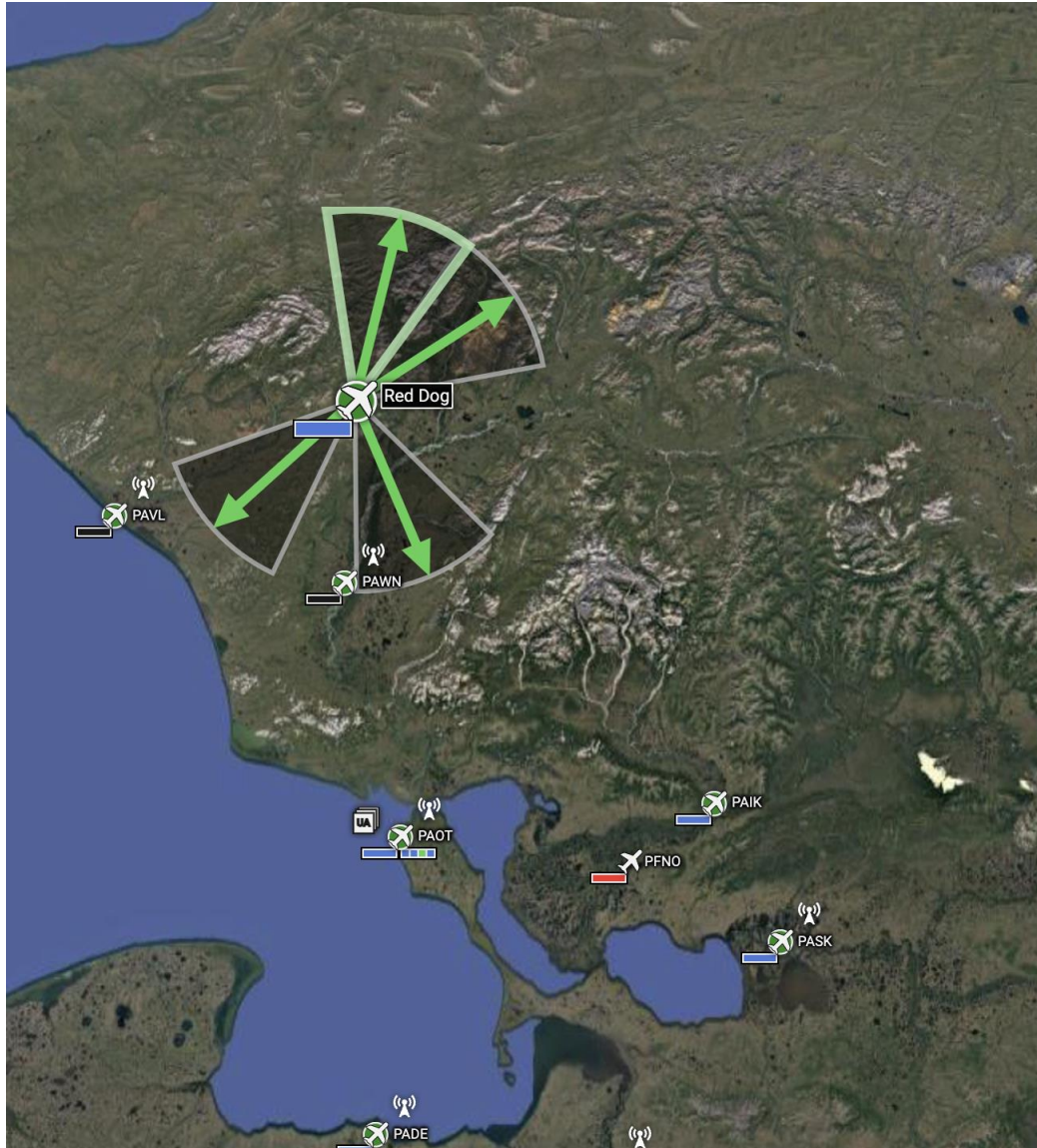
NorthEast (40°)	South (160°)	SouthWest (205°)	

Weather Data Weather Trends PIREPs RCO Airport Info NOTAMs (PilotWeb)





# 19 August 2024/DOY 232 Seward Peninsula



**Red Dog (PADG)** UTC:20:08 Local:12:08

METAR PADG 191857Z 32026G30KT 10SM -RA SCT013 SCT018 OVC027 04/03 A2942

Red Dog (N) 20:01 08/19/24 (UTC) 12:01 08/19/24 (AKDT)

**CLEARDAY VISUAL REFERENCE**

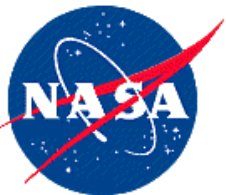
1400' MSL 1.5 SM  
3800' MSL 12.0 SM  
3000' MSL 10.0 SM  
Site Elevation: 962' MSL

FAA advisory weather product

Show Camera Loop

 North (14°)	 NorthEast (57°)	 SouthEast (157°)			
<a href="#">Weather Data</a>	<a href="#">Weather Trends</a>	<a href="#">PIREPs</a>	<a href="#">RCO</a>	<a href="#">Airport Info</a>	<a href="#">NOTAMs (PilotWeb)</a>





# 19 August 2024/DOY 232

## Seward Peninsula



**Wien Meml (PAOT)** UTC:20:08 Local:12:08

METAR PAOT 191953Z 29032G42KT 7SM BKN015 OVC023 05/04 A2963 RMK AO2 PK WND 27044/1928 RAB1854E35 SLP033 P0000 T00500039

Kotzebue (NE) 20:02 08/19/24 (UTC) 12:02 08/19/24 (AKDT)

CLEARDAY VISUAL REFERENCE

Shoreline 8.0 SM  
Site Elevation: 20' MSL

FAA advisory weather product

Show Camera Loop

 NorthEast (25°)	 East (100°)	 SouthEast (150°)	
---------------------	-----------------	----------------------	--

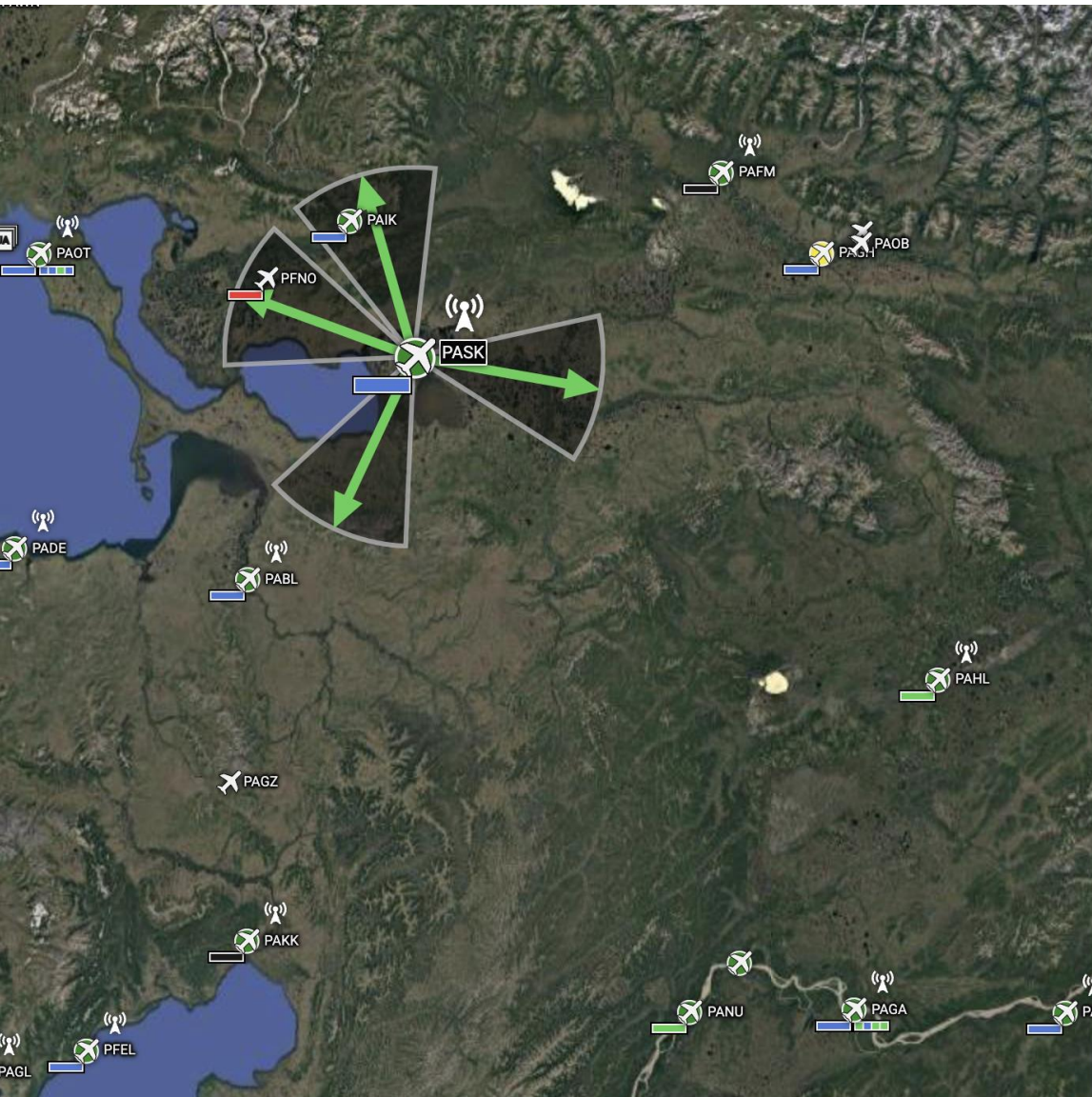
Weather Data | Weather Trends | PIREPs | RCO | Airport Info | NOTAMs (PilotWeb)





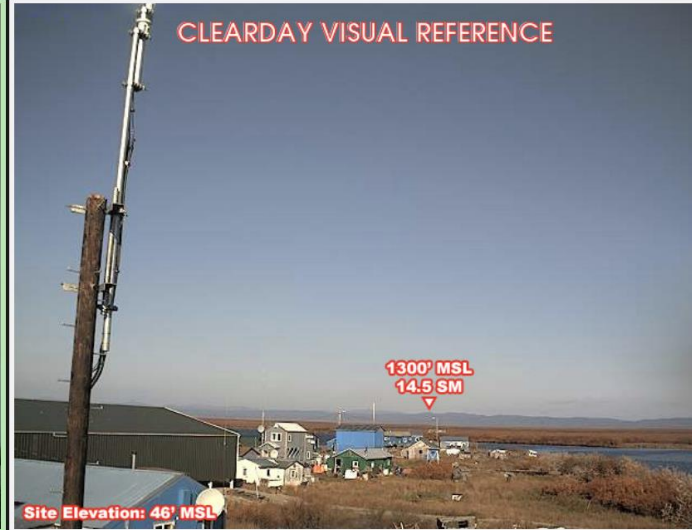
# 19 August 2024/DOY 232

## Seward Peninsula



Selawik (PASK) UTC:20:08 Local:12:08

METAR PASK 191956Z AUTO 26020G31KT 10SM -RA BKN014 OVC019 06/04 A2966 RMK AO2 PK WND 26031/1953 SLP039 P0002 T00610044



Show Camera Loop

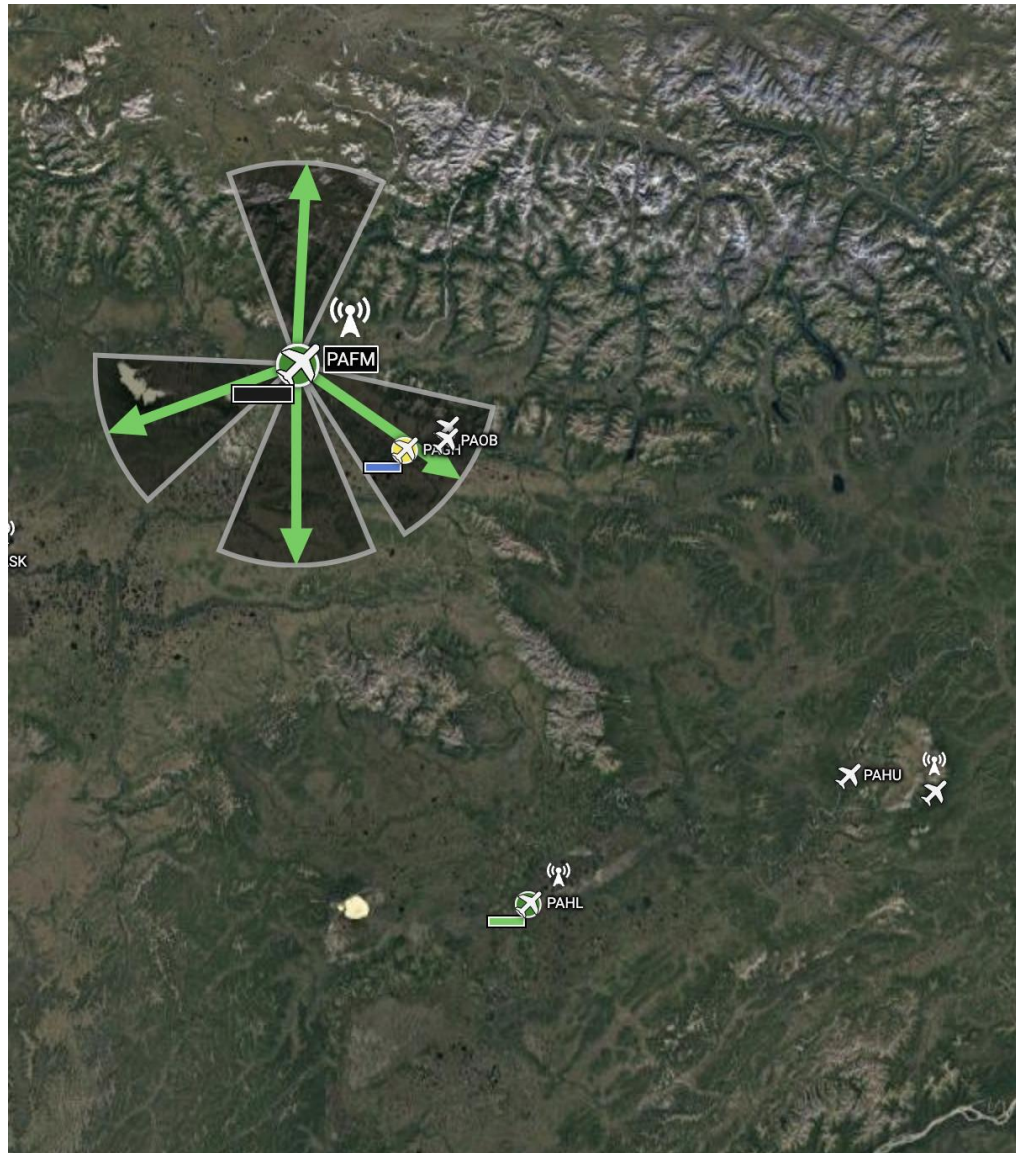
 North (344°)	 East (100°)	 SouthWest (205°)	
------------------	-----------------	----------------------	--

Weather Data Weather Trends PIREPs RCO Airport Info NOTAMs (PilotWeb)





# 19 August 2024/DOY 232 Seward Peninsula



**Ambler (PAFM)** UTC:20:08 Local:12:08

Ambler (PAFM) 20:01 08/19/24 (UTC) 12:01 08/19/24 (AKDT)

**CLEARDAY VISUAL REFERENCE**

3350' MSL 9.0 SM  
2200' MSL 8.0 SM  
3100' MSL 17.0 SM  
Airport building 1.0 SM  
Site Elevation: 105' MSL

FAA advisory weather product

Show Camera Loop

North (3°)	SouthEast (125°)	South (180°)	

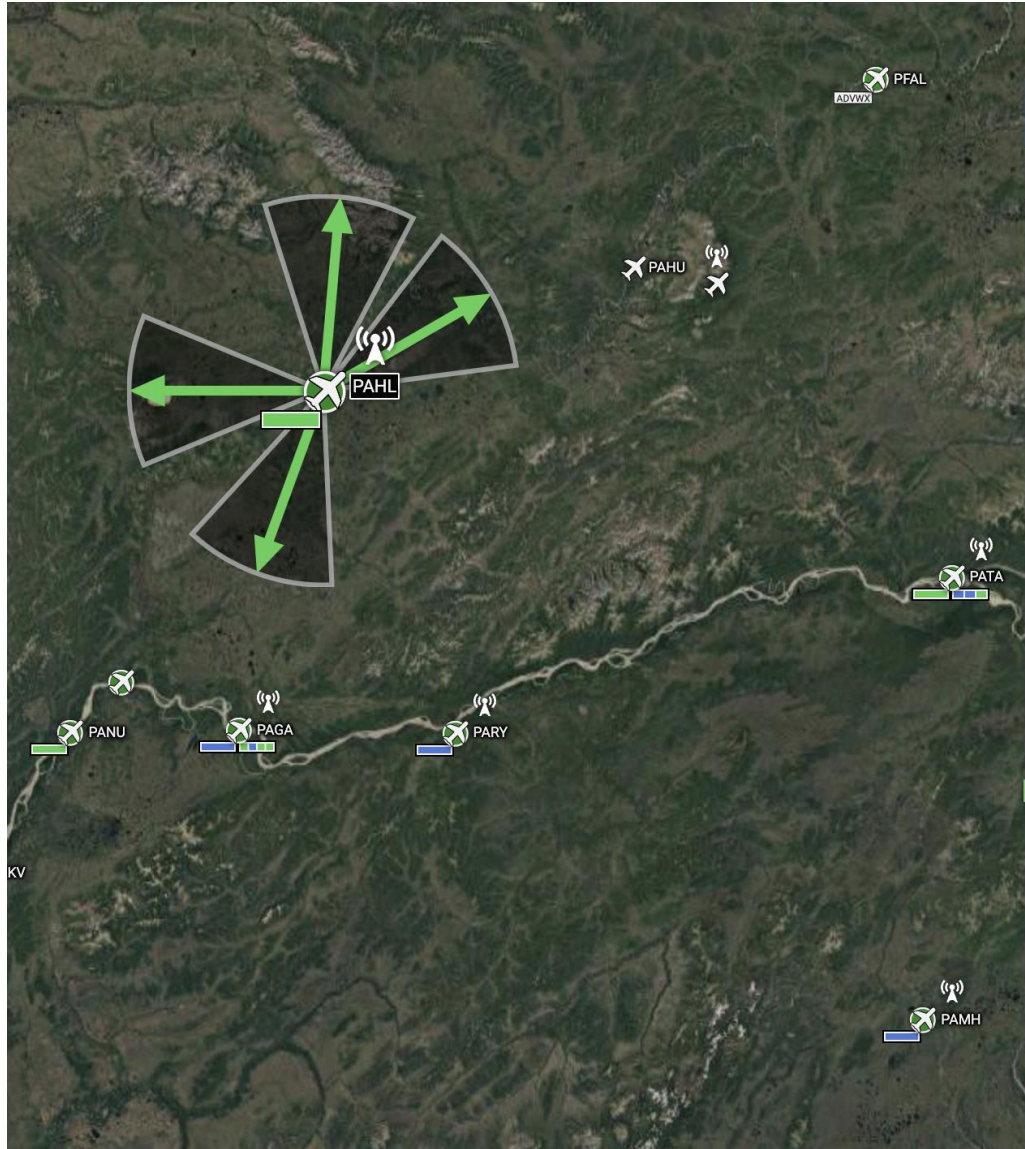
Weather Data Weather Trends PIREPs RCO Airport Info NOTAMS (PilotWeb)





# 19 August 2024/DOY 232

## Seward Peninsula



**Huslia (PAHL)** UTC:20:09 Local:12:09

METAR PAHL 191956Z AUTO 27007KT 10SM SCT016 BKN033 OVC042 07/05 A2971 RMK AO2 RAE52 SLP062 P000 T00670050 TSNO

Huslia (PAHL) 20:08 08/19/24 (UTC) 12:08 08/19/24 (AKDT)

**CLEARDAY VISUAL REFERENCE**

3100' MSL 32.0 SM      3200' MSL 30.0 SM

Site Elevation: 195' MSL

FAA advisory weather product

Show Camera Loop

North (5°)	NorthEast (60°)	South (200°)	

Weather Data    Weather Trends    PIREPs    RCO    Airport Info    NOTAMs (PilotWeb)



